



**WizSoft**

**Wiz Format - Version 3.0**

**Complete Windows Floppy Disk Format Program by  
WizSoft**

**Copyright 1992 WizSoft - All Rights Reserved**

The software described herein is furnished under a license agreement. It is against the law to copy this software under any circumstances except as provided by the license agreement.

U.S. Government Restricted Rights

Use, duplication, or disclosure by the Government is subject to restrictions as set forth in subdivision (b) (3) (ii) of the Rights in Technical Data and Computer Software clause at 252.227-7013. Contractor/manufacturer is WizSoft / #M201 / 15520 Mill Creek Blvd / Mill Creek, WA 98012

## **COPYRIGHT**

\_ Copyright 1992 WizSoft. All Rights Reserved. This document may not, in whole or part, be copied, photocopied, translated, or reduced to any electronic medium or machine readable form, without prior consent, in writing, from WizSoft. All software described in this manual is \_ Copyright 1992 WizSoft. All rights reserved. The distribution and sale of this product is intended for the sole use of the original purchaser . Lawful users of this program are hereby licensed only to read the programs, from their media into memory of a computer, solely for the purpose of executing the programs on one machine at a time. Duplicating or copying for other than backup purposes, or selling or otherwise distributing this product is a violation of the law and this agreement.

## **DISCLAIMER**

**WIZSOFT DISCLAIMS ALL WARRANTIES RELATING TO THIS SOFTWARE, WHETHER EXPRESSED OR IMPLIED, INCLUDING BUT NOT LIMITED TO ANY IMPLIED WARRANTIES OF MERCHANTABILITY AND FITNESS FOR A PARTICULAR PURPOSE, AND ALL SUCH WARRANTIES ARE EXPRESSLY AND SPECIFICALLY DISCLAIMED. NEITHER WIZSOFT NOR ANYONE ELSE WHO HAS BEEN INVOLVED IN THE CREATION, PRODUCTION, OR DELIVERY OF THIS SOFTWARE SHALL BE LIABLE FOR ANY INDIRECT, CONSEQUENTIAL, OR INCIDENTAL DAMAGES ARISING OUT OF THE USE OR INABILITY TO USE SUCH SOFTWARE EVEN IF WIZSOFT HAS BEEN ADVISED OF THE POSSIBILITY OF SUCH DAMAGES OR CLAIMS. IN NO EVENT SHALL WIZSOFT'S LIABILITY FOR ANY DAMAGES EVER EXCEED THE PRICE PAID FOR THE LICENSE TO USE THE SOFTWARE, REGARDLESS OF THE FORM OF CLAIM. THE PERSON OR ENTITY USING THE SOFTWARE BEARS ALL RISK AS TO THE QUALITY AND PERFORMANCE TO THE SOFTWARE.**

*Some states do not allow the exclusion of the limit of liability for consequential or incidental damages, so the above limitation may not apply to you.*

**This agreement shall be governed by the laws of the State of Washington and shall inure to the benefit of WizSoft and any successors, administrators, heirs and assigns. Any action or proceeding brought by either party against the other arising out of or related to this agreement shall be brought only in a STATE or FEDERAL COURT of competent jurisdiction located in Snohomish County, Washington. The parties hereby consent to in personam jurisdiction of said court.**

### **License Agreement**

Your use of this product indicates your acceptance of the following terms and conditions:

1. **Copyright:** These programs and the related documentation are copyright. The sole owner is WizSoft. You may not use, copy, modify, or transfer the programs, documentation, or any copy except as expressly provided in this agreement.
2. **License:** This software and the disks on which it is contained is licensed to you, for your own use. This is copyrighted software. You are not obtaining title to the software or any copyright rights. You may not sublicense, rent, lease, convey, modify, translate, convert to another programming language, decompile, or disassemble the software for any purpose. You may make as many copies of this software as you need for back-up purposes. You may use this software on more than one computer, provided there is no chance it will be used simultaneously on more than one computer. If you need to use the software on more than one computer simultaneously, please contact us for information about site licenses.
3. **Terms:** This license is effective until terminated. You may terminate it by destroying the program, the documentation and copies thereof. This license will also terminate if you fail to comply with any terms or conditions of this agreement. You agree upon such termination to destroy all copies of the program and of the documentation.

## **What Shareware is**

Shareware is copyrighted software which is distributed by authors through bulletin boards, on-line services, disk vendors, and copies passed among friends. It is commercial software that you are allowed to try before you pay for it. This makes Shareware the ultimate in money back guarantees.

Most money back guarantees work like this: you pay for the product and then have some period of time to try it out and see whether or not you like it. If you don't like it or find that it doesn't do that you need, you return it and you get your money back. Some software companies won't even let you try their product, since to qualify for a refund the diskette envelope must have an unbroken seal.

With Shareware you get to try it for a reasonable limited time (like 30 days), without spending a penny. You are able to use the software on your own system(s), in your own special work environment, with no sales people looking over your shoulder. If you decide not to continue using it, you throw it away and forget all about it. There is no paperwork, no phone calls, and no correspondence to waste your valuable time. You only pay for it if you continue to use it.

Shareware is a distribution method, not a type of software. Shareware is produced by accomplished programmers, just like retail software. There is good and bad Shareware, just as there is good and bad retail software. The primary difference between Shareware and retail software is that with Shareware you know if it's good or bad before you pay for it.

You benefit because you get to use the software to determine whether it meets your needs, before you pay for it. Authors benefit because they are able to get their products into your hands without the expenses it takes to launch a traditional retail software product. There are many programs on the market today that would never have become available without the Shareware marketing method.

The Shareware system and the continued availability of quality Shareware products depend on your willingness to register and pay for the Shareware you use. It's the registration fees you pay which allow us to support and continue to develop our products. Please show your support for Shareware by registering those programs you actually use and by passing them on to others. Shareware is kept alive by your support!

### **What do I get when I register?**

If you like Wiz Format and you choose to use it, you must register it. You are not allowed to keep or use Wiz Format unless you register. When you register, we send the latest version of the package. It will not have the opening delay screen that you get with the unregistered version . As well, you will receive a floppy disk containing Wiz Format and a printed Manual. You will also receive **FREE** upgrades to Wiz Format for 1 year from date of purchase.

To register Wiz Format, complete the order form and send it with a check or money order for \$15.95 US for 5.25" disk or \$16.95 US for 3.5"disk and mail it to the address below. We're sorry but we do not currently accept Credit card orders, nor do we accept unsolicited purchase orders.

WizSoft  
#M201  
15520 Mill Creek Blvd.  
Mill Creek, WA 98012  
206-338-3331

# Contents

## Getting Started

1.0	Getting Started	7
1.1	Make a Backup Copy	7
1.2	New Windows Users	7
1.3	Packing List	8
1.4	System Requirements	8
1.5	Running Setup	9
1.6	Installation Options	10

## Fundamentals

2.0	Fundamentals	11
2.1	What is Wiz Format	11
2.2	Elements of the Main Screen	12-13
2.3	Selecting a Drive	13
2.4	Selecting a Capacity	13
2.5	Formatting Options	14
2.6	System Diskette	14
2.7	Quick Format	14
2.8	Verify	15
2.9	Format	15
2.10	Cancel Format	15
2.11	Exit	15
2.12	Track	15
2.13	Comp	15
2.14	Head	15
2.15	Menu Bar	16

## **Chapter 1 Getting Started**

### **1.0 Getting Started**

This manual covers every aspect of Wiz Format, from installation to its easy to uses point - and - click interface.

Getting Started: This chapter discusses system requirements, the setup program, and how to install Wiz Format.

Fundamentals: This chapter covers basic operation and structure. Wiz Format contains a graphical user interface (GUI).

### **1.1 Make a Backup Copy**

Before you begin the installation process, we recommend you make a backup copy of your Wiz Format floppy disk. Your end-user license agreement allows you to make at least one copy of the disk for archival purposes. After making a copy, you should move the write-protect tab on both the original and backup copies to prevent any accidental erasure. Put your originals in a safe place and use the backup copy for the installation process.

### **1.2 New Windows Users**

Before you can use Wiz Format, you must have Windows 3.0 or higher installed on your hard disk. If you are new to Windows, we recommend that you first become familiar with its basic operation. All references to "Windows" throughout this manual refer to Windows 3.0 or higher.

This manual assumes that you have a working knowledge of Windows, such opening and closing of applications, using a mouse, etc. You should also have some experience with Program Manager and File Manager.

## Chapter 1 Getting Started

### 1.3 Packing List

Your Wiz Format package should include the following materials:

- o Installation disk (in a sealed license agreement envelope)
- o User's Manual

### 1.4 System Requirements

Wiz Format is designed to run with Windows 3.0 or higher. You must have previously installed Windows on your hard disk before you can use or install Wiz Format. Wiz Format will not work with versions of Windows prior to 3.0.

**Computer:** You need a 80286, 80386 or 80486 computer. Your system should have a hard disk with at least 2 - 3 megabytes of free disk space.

**Memory:** We strongly recommend a minimum of 2MB of memory and operating Windows in either standard or enhanced mode.

**Mouse:** We strongly recommend that you use a mouse with Wiz Format.

**Monitor:** We strongly recommend that your system be equipped with a color or monochrome display monitor having EGA resolution or higher. A 16 color VGA monitor is highly recommended as the minimum configuration.

**Printer:** Wiz Format has no requirement for a printer.



## Chapter 1 Getting Started

### 1.5 Running Setup

The SETUP.EXE program on the Wiz Format floppy diskette performs all the steps necessary to automatically install Wiz Format onto your hard drive. The Setup program copies all the necessary files and will install a program icon onto the Program Manager desktop.

The Setup program itself is a Windows-based program. To install, start Windows and insert the Wiz Format diskette into the "A" or "B" drive. Select RUN item in the Program Manager's FILE menu. When the dialog box appears, type in the letter of the disk drive containing Wiz Format followed by the Setup program name. For example, to run the Install program from the "A" drive, type the following:

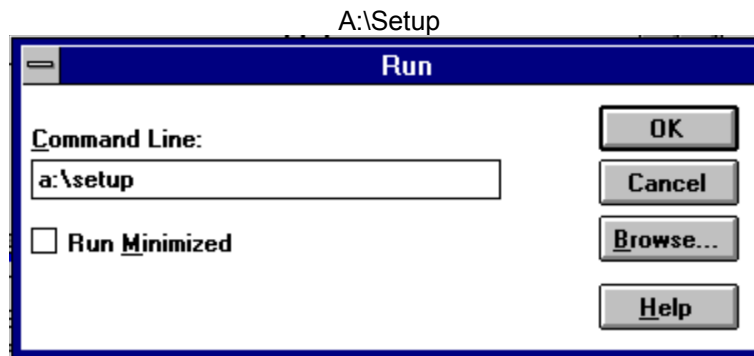


Figure 1

After a few seconds, the Setup program will display its main screen and the installation process will begin. During installation, the Setup will prompt you for any additional changes, as well as inform you about the progress of installation. There are a couple of options that you will need to respond to during installation. The setup program itself briefly covers these options, and additional details will follow.

## Chapter 1 Getting Started

### 1.6 Installation Options

While Setup is running, you will be asked a couple of questions regarding options that the Setup program will do for you. When setup displays these options, a brief description of the individual option will be given.

Do not be overly concerned in selecting the "right" choices. In all cases, these options can be changed at a later time. Simply click the appropriate button or depress the ENTER key to accept the default choice(s). The default choice(s) displayed are applicable to most users.

**DEFAULT PATHNAME:** The default pathname is the hard drive and/or subdirectory that Setup will copy all files to. Normally, it should be set to the Windows directory. By default Setup will set this to the C:\Windows directory. This is suitable for most users. If you like, you can enter a different pathname, but you should limit your entry to hard drives or other storage devices that are present at all times. Do not set the pathname to a floppy drive or any other "temporary" drive, such as a network drive that may not be present at a later session.

**PROGRAM MANAGER DESKTOP:** The Setup program by default will create a group icon called Wiz Format, you may change it to another name if you wish. You will be prompted for the creation of the group icon. After creating the group icon, Setup will place the program icon for Wiz Format into the group icon.

## **Chapter 2 Fundamentals**

### **2.0 Fundamentals**

One of the key benefits of Microsoft Windows is its ability to provide a common user interface across different applications. Opening and closing of a window, pulling down a menu is done in much the same way, whether you're using a word processor, spreadsheet and etc.. If you are familiar with the basic Windows functions, you will have no problems operating Wiz Format.

### **2.1 What is Wiz Format**

Wiz Format is a floppy disk formatting program. Some of the unique features of Wiz Format are its 3D type graphics effect along with color indicators to show progress. Wiz Format is simple to use and is an alternative solution to the format routine found in File Manager.

## Chapter 2 Fundamentals

### 2.2 Elements of the Main Screen

The main screen contains various controls such as buttons, check boxes, option boxes, menu, drop-down combo box and indicators. All graphics on this screen give the effect of a stunning 3D look and feel. These controls provide you with the ability to format your floppy diskettes. The major features of the main screen and their locations are shown in figure 2

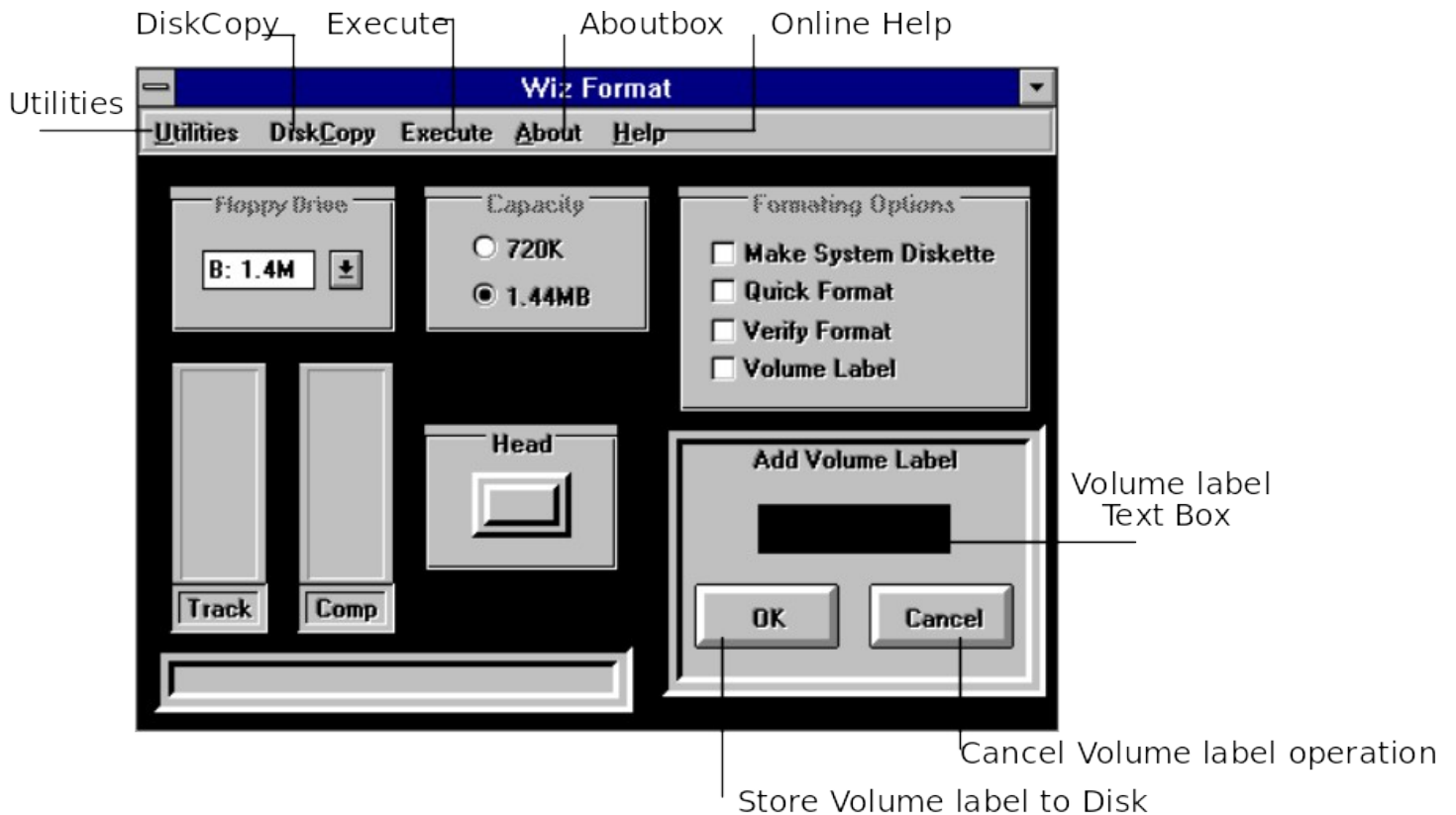


Figure 2

**Combo Box:** This combo box is a drop-down type that allows for a selection option of either the "A" or "B" drive.

**Option Box:** These controls allow for the selection of formatting capacities.

**Menu:** The menu lets you select the Aboutbox and also the on-line help function.

**Check Box:** These controls offer you the selection of formatting options.

**Buttons:** These controls are the command buttons.

## Chapter 2 Fundamentals

Indicators: These indicators inform you of the disk formatting progress.

### 2.3 Selecting a Drive

A combo list box is provided for the selection of the drive to format. The "A" Drive will be selected by default. To select another Drive, press the down arrow button and click on the desired Drive.

The program will automatically sense how many drives are available and the type of Drives on the system. The type of Drive will be indicated to the right of the Drive letter.

The Capacity will change automatically according to the Drive type that is indicated.

Type of Drives available:

5.25	360K
5.25	1.2M
3.5	720K
3.5	1.44M

### 2.4 Selecting a Capacity

Capacity gives you the ability to select between a max of 2 different Disk capacity formats. The type of selections available are automatically shown according to the Drive type that is selected.

By default the Disk will be formatted to the highest capacity that the disk will take.

Selection of capacity type is highly recommended.

## **Chapter 2 Fundamentals**

### **2.5 Formatting Options**

There are three types of Formatting Options. Any one, all or none can be selected.

Click the appropriate check box to make the desired selection.

Formatting Options available are:

- System Diskette
- Quick Format
- Verify

### **2.6 System Diskette**

This option allows for the creation of a bootable disk. System files are automatically added after the disk has been formatted.

Select this option if a bootable disk is desired.

### **2.7 Quick Format**

This option will only work if the disk has been previously formatted. Quick Format deletes the directory info (the file allocation table and root directory), but the disk is not scanned for bad sectors.

The bar graphs are not updated in this option, since the formatting is rather quick.

### **2.8 Verify**

This option will verify each sector as it is being formatted.

## **Chapter 2 Fundamentals**

### **2.9 Format**

This is the command button to initiate the formatting of the disk. Formatting can be canceled at anytime by clicking the Cancel Format button.

### **2.10 Cancel Format**

This is the command button to initiate the cancellation of formatting.

### **2.11 Exit**

This is the command button to terminate the program.

### **2.12 Track**

This is an indicator to inform you of the track status. As the disk is formatted the bargraph will update you with the current track number.

### **2.13 Comp**

This is an indicator to inform you of the percentage of completion. As the disk is formatted the bargraph will update you with the current percentage of completion.

### **2.14 Head**

This is an indicator to inform you of what head is in use. As the disk is formatted the head number will be shown.

## Chapter 2 Fundamentals

### 2.15 Menu Bar

The Menu Bar (see figure 1) allows the user to Select the Utilities, Aboutbox or On-line Help. The Utilities option allows the user to add, view or change the volume label on a floppy disk. Figure 1 shows the main screen once this option is chosen.

**Volume Label Text Box:** This text box will show any label that is currently on the disk. If there is no volume label, then this box will be empty. To add or change a volume label, simply type in the new label. A maximum of 11 characters can be used for a volume label name.

**OK Button:** This button is used to store the new or changed volume label to disk.

**Cancel Button:** This button is used to abort the Volume label operation and return to the screen as shown in figure 1.

**This concludes the Shareware manual for Wiz Format. Other features may be read about by accessing the on-line help.**